

Conf: Early Reg. Discount Ends 9/7

Jackson/Wall, New Jersey: The Lyme Disease Association (LDA) and Columbia University College of Physicians and Surgeons announce their jointly sponsored 13th annual national conference, entitled "Lyme and Tick-Borne Diseases: Microbial Persistence & Tick-Borne Diseases New Scientific & Clinical Directions." Designed for health care providers and offering 13.0 AMA PRA Category 1 Credits™ to CME registrants, the conference is Sept. 29, 30, 2012, Hyatt Bellevue, Philadelphia, PA. The public is also invited to register. Lyme Disease Association Conference Info

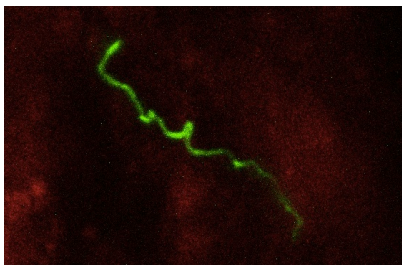
Scientific Conference Presents Latest Findings in Lyme Disease Research & Clinical Developments

Early Registration Discount in Effect through September 7

Jackson/Wall, New Jersey: The Lyme Disease Association (LDA) and Columbia University College of Physicians and Surgeons announce their jointly sponsored 13th annual national conference, entitled "Lyme and Tick-Borne Diseases: Microbial Persistence & Tick-Borne Diseases New Scientific & Clinical Directions." Designed for health care providers and offering 13.0 AMA PRA Category 1 Credits™ to CME registrants, the conference is Sept. 29, 30, 2012, Hyatt Bellevue, Philadelphia, PA. The public is also invited to register. Lyme Disease Association Conference Info

Twenty faculty members including two European presenters, are led by the conference Course Co-Directors Stephen Barthold, DVM, PhD (University of California, Davis), a member of the Institute of Medicine and a pioneer in the study of *Borrelia* in the Mouse model, and Brian Fallon, MD, MPH, Director of the Columbia Lyme & Tick-Borne Diseases Research Center in New York, well-known for research on neurologic and neuropsychiatric Lyme disease. The conference presenters will provide their expertise covering a broad range of research and

clinical topics.



Borrelia burgdorferi (Lyme spirochete) expressing green fluorescence protein in tissue of a mouse.

Thanks to Stephen W. Barthold, DVM, PhDA focus of the meeting is to explore the significance of recent findings in the monkey and mouse model that demonstrate the persistence of *Borrelia burgdorferi* (Bb) infection despite antibiotic treatment. A presentation from the Chief of the Bacterial Diseases Branch of the Centers for Disease Control & Prevention (CDC), Division of Vector-Borne Infectious Diseases, will describe recent trends in tick-borne diseases, including information about the newly described phlebovirus identified in 2 patients after tick exposure in Missouri. Other topics include: diagnostic assays from Europe and the implications of genomic differences in Bb strains in the United States; what we know about chronic inflammation in Lyme disease based on the mouse model; treatment approaches including in vitro sensitivity studies of Bb to antimicrobials and the role of nutrition in recovery; newly studied reservoir targeted vaccines; a review of how Bb causes disease and its implications for the pregnant woman; typical & atypical neurologic presentations (including "Alice in Wonderland Syndrome"); immunologic findings in early Lyme disease; long-term follow-up studies of neurologic Lyme disease; how Bb compromise the blood brain barrier; the significance of antiphospholipid antibodies in patients with chronic symptoms; and an exploration of Lyme disease, depression and suicide. Poster presentations will also be available. Exhibitors will be on-site.

Lyme disease is a serious multi-systemic infection, which can cause arthritic, muscular-skeletal, cardiac, neurologic,

ophthalmologic, and psychiatric manifestations. The classic bull's eye rash is not always present, and testing may not be reliable, so an early clinical diagnosis and appropriate treatment are needed to help to prevent Lyme from becoming established.

ABOUT THE LDA: The Lyme Disease Association (LDA) is partners with over 40 other organizations nationwide, and LDA and affiliate Lyme Research Alliance endowed the Columbia Lyme Research Center in New York in 2007, the only Center to focus on chronic Lyme disease. LDA-funded research has been published in 25 peer-reviewed journals to date. LDA has awarded over 81 research and 70 educational grants, provided 250 grants through its LymeAid 4 Kids fund for uninsured children, has free doctor referrals on its website, and provides free brochures available through online order.

Press Contact: Pat Smith 888-366-6611
President@LymeDiseaseAssociation.org