

LDA/Columbia Conference (2)

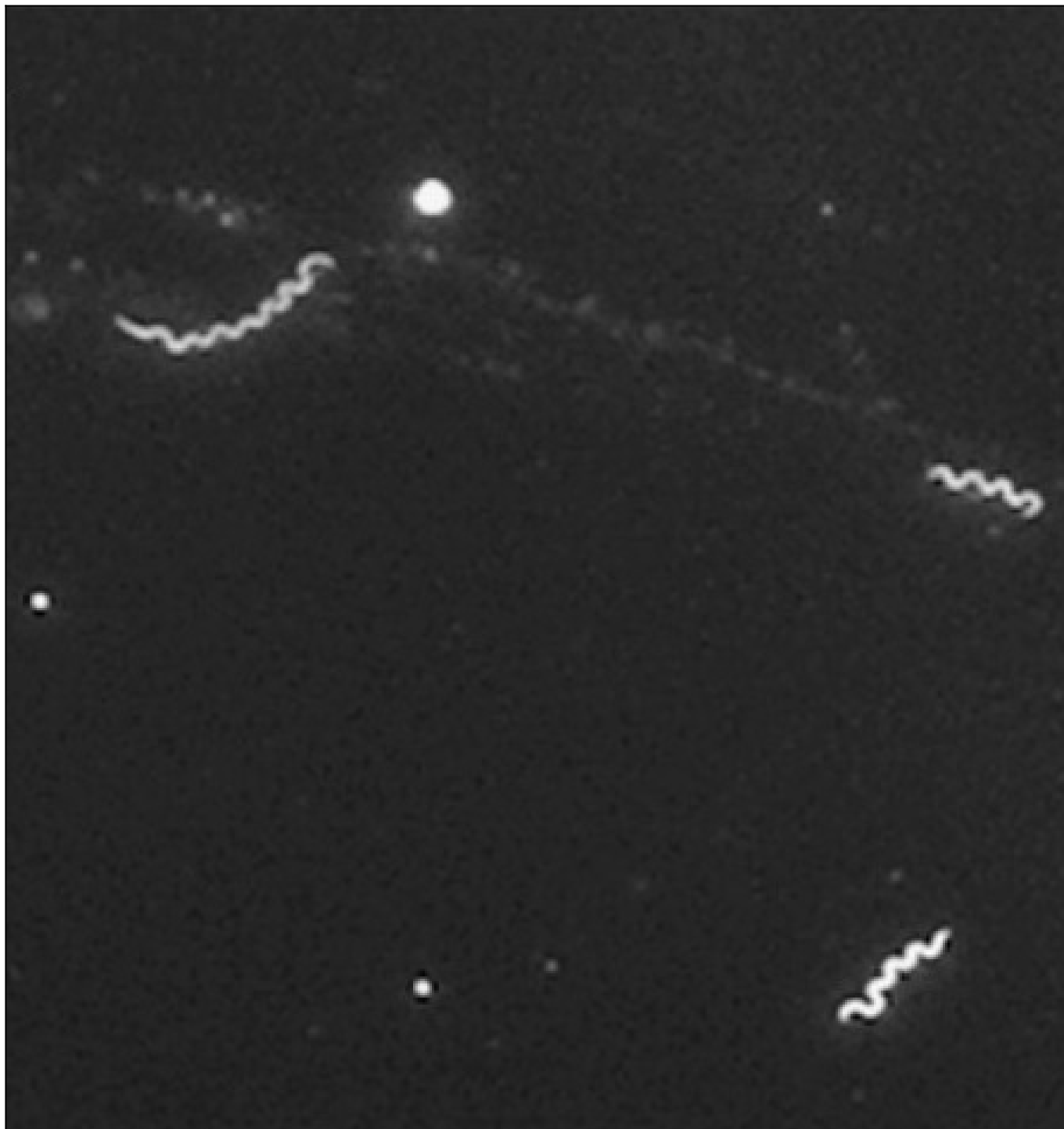
CME

Lyme

[View Channel 10 video interview with Julie Merolla, Lyme Disease Association Chapter Chair](#)

Register

Now!

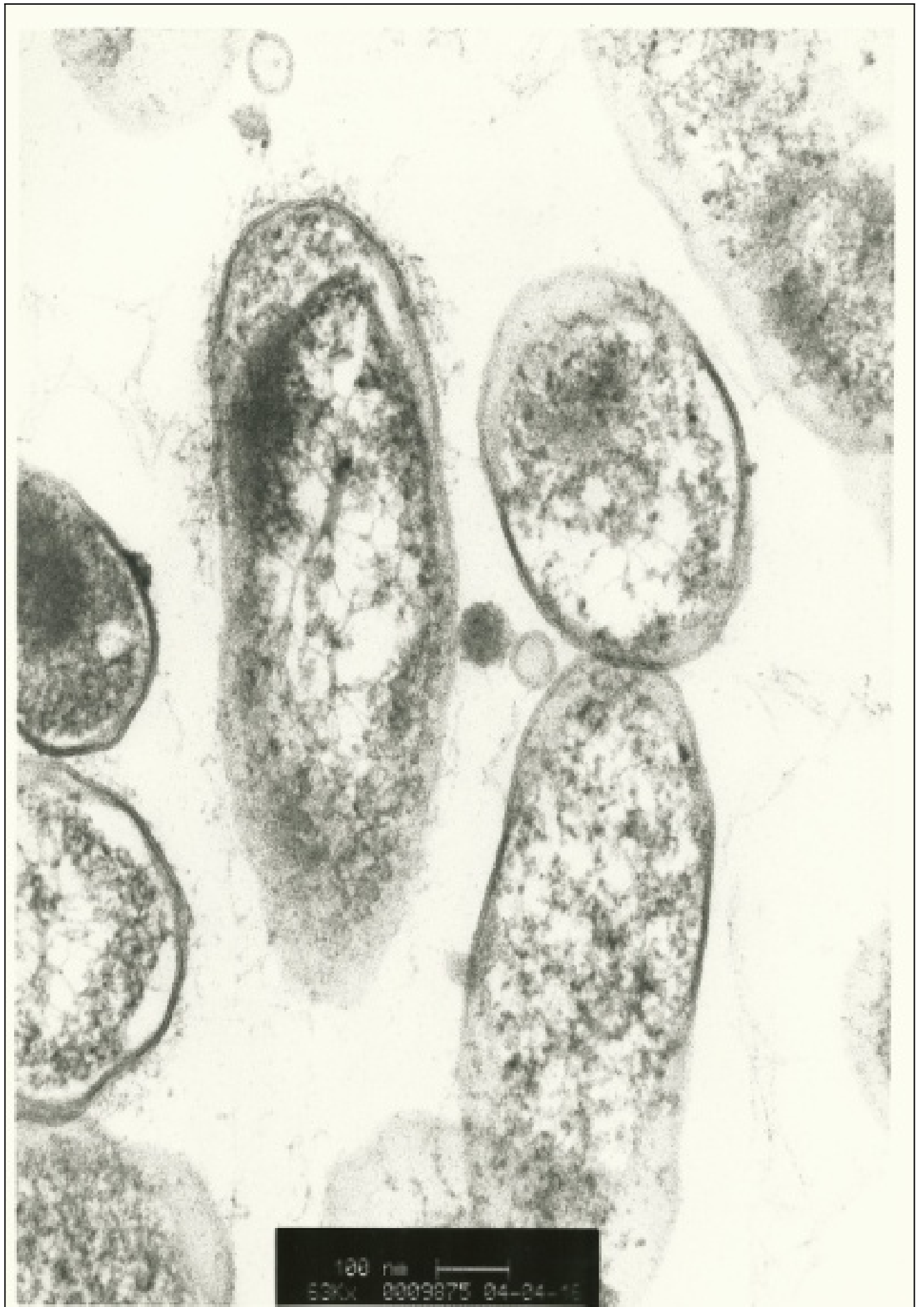


Dark-field microscopy of *Borrelia miyamotoi* in spinal fluid

(Index Case in North America)¹

LDA/Columbia's 16th annual scientific CME conference: Lyme & Other Tick-Borne Diseases: Science Bridging the Gap, November 14 & 15, 2015 at the Providence-Warwick Crowne Plaza, Warwick, Rhode Island. Jointly provided by Columbia University, with Brian Fallon, MD as Director and Richard Marconi, PhD, as Co-director. A room block is offered by the hotel for the event.

*CME Credits** are offered by Columbia University to physician attendees. The conference features twenty faculty consisting of clinicians and researchers. In addition to the co-directors (above) and one speaker from England, Dr. Tim Brooks, and the remainder of the faculty from the US are Drs. W.Robinson, K.Strle, K.Lewis, Y.Zhang, G. Ramesh, H. Minhas, R.Ostfeld, J.Aucott, E.Breitschwerdt, C. Chiu, E.McGintee, P.Molloy, R.Stricker, S.Donta, W.Padula, N. Komar, and S.Schutzer.



100 nm
53KX 0009875 04-04-19

EM (electron microscopy) of Bartonella henselae isolate Topics feature very current research and clinical data such as the keynote lecture on Next Generation Diagnostics, Point-Counterpoint on whether Lyme can be sexually transmissible, persists, alpha gall meat allergy from lone star ticks, neuroborreliosis, suicide case report, visual disturbances, viral coinfections including Heartland virus, bartonella, Borrelia miyamotoi, tick populations, vaccine development, cytokine & chemokine biomarkers, microbial and host factors in immune response, and PANS, PANDAS & Lyme.

***AMA Credit Designation Statement:**

The College of Physicians and Surgeons designates this live activity for a maximum of 13.25 *AMA PRA Category 1 Credits*™. Physicians should claim only the credit commensurate with the extent of their participation in the activity.

- 1- Dark-field microscopy courtesy of Philip J. Molloy, MD, Imugen Lab
- 2- Electron Microscopy courtesy of Intracellular Pathogens Research Laboratory, College of Veterinary Medicine, North Carolina State University

Scholarships

The Lyme Disease Association, Inc. (LDA) is offering scholarships to the conference to eligible medical students, residents, post-doctoral candidates, fellows, veterinarians with equivalent status to the above, and Nurse Practitioner candidates in a doctoral program. **Several more medical student scholarships are available, so the date to apply has been extended until October 15.** [Click here for Scholarship Application.](#)

Agenda	Registration	Faculty Biographies	Hotel
------------------------	------------------------------	-------------------------------------	-----------------------

See other conference links on left menu

16th Annual Lyme CME Conference (11/14-15)

{youtube}dZBVRfhzoY8{/youtube}

Thanks: Steven & Alexandra Cohen Foundation

THANK YOU!

The LDA received educational gift support for this conference from the
Steven & Alexandra Cohen Foundation



The LDA received commercial support from

IGeneX, Inc.
