

Partnership for T-B Diseases Education, CME for Docs

What Every Primary Care Clinician Should Know About the Diagnosis of Lyme Disease

Elizabeth Maloney, MD
Content updated August 15, 2015



Primary care physicians and other healthcare providers seeking CME credits can now approach the non-profit Partnership for Tick-Borne Diseases Education (PTDE) led by Elizabeth Maloney, MD, a physician with longstanding experience in speaking about tick-borne diseases, organizing Lyme disease conferences, and co-authoring treatment guidelines on Lyme and other tick-borne diseases.

Primary care physicians and other healthcare providers seeking CME credits can now approach the non-profit Partnership for Tick-Borne Diseases Education (PTDE) led by Elizabeth Maloney, MD, a physician with longstanding experience in speaking about tick-borne diseases, organizing Lyme disease conferences, and co-authoring treatment guidelines on Lyme and other tick-borne diseases.

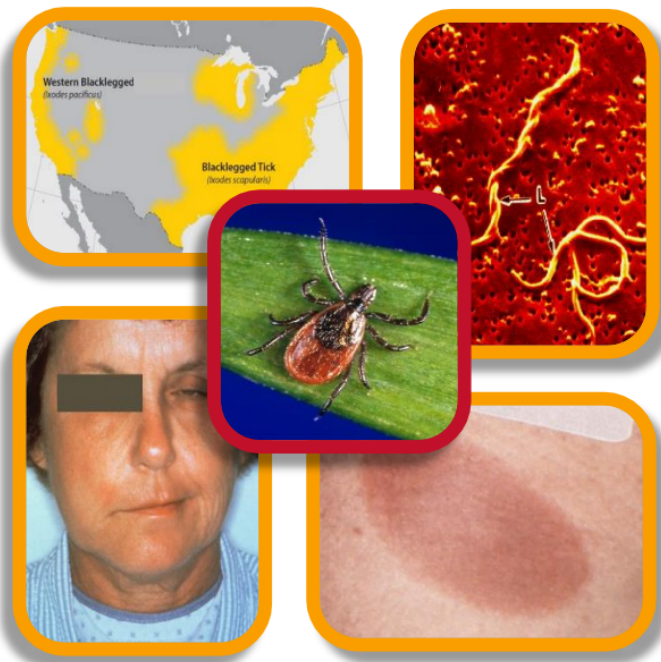
Dr. Maloney has been on the organizing committee for several Lyme Disease Association (LDA) annual CME scientific conferences.

A free downloadable brochure “What Every Primary Care Clinician Should Know About the Diagnosis of Lyme Disease” is available through the LDA website ([Click here for brochure](#)), and PTDE can be contacted directly by email ptde.emaloney@gmail.com or go to [LymeCME](#) for modules.

What Every Primary Care Clinician Should Know About the Diagnosis of Lyme Disease

Elizabeth Maloney, MD

Content updated August 19, 2018



Purpose & Disclaimer: The Lyme Disease Association, Inc. (LDA) website, www.LymeDiseaseAssociation.org, is intended as a resource for all individuals interested in learning about Lyme disease and other tick-borne diseases. The information presented is for informational purposes only. No information on the site should be considered medical or legal advice. The LDA does not give medical or legal advice. Any information on the site should not be used to take the place of advice from your personal physician or from any other professional. Any health care or legal information on the website is attributed to the professional(s) who wrote the information and is not necessarily endorsed by the Lyme Disease Association. Links to other sites are provided for ease of research, and information on those sites is the opinion of those who publish the sites and is not necessarily that of the LDA. The LDA does not endorse professionals, products or services.